



Canvia: The Realistic Art Display and Platform

Contents

- 1 : Links to Download Canvia desktop app:..... 2**
- 2: Install latest firmware in the Canvia system 2**
- 3: Re-register/authenticate the Canvia device, when you get token error 3**
- 4: Delete all personal data in the Canvia system, 4**
- 5: Create and delete personal playlist 5**
- 6: Operations within the Canvia device:..... 10**
 - (i) “Playback queue”(Slideshow, Shuffle and Playback duration): 10
 - (ii) “Artworks on Device” 11
 - (iii) “Playlists on Device” 11
 - (iv) “Local Uploads” 11
- 7. Play your personal images and multi file upload as personal playlists 12**

Steps to download latest firmware on the Canvia device:

1 : Links to Download Canvia desktop app:

Mac:[Check this link for installation help: <https://kubadownload.com/news/codesign-sign-app>]

Download Link: [Click here](#).

Windows:[Right click on EXE install file and give permission for installation]

Download Link: [Click here](#).

After Installation

- a) Use your canvia login/password after desktop app installation.
- b) Goto settings-> use your home wifi credentials and click "Save"
- c) Goto->My devices-> click refresh. You need to wait till you see your IP address under SSID/IP.
- d) Once you see IP address, click on the IP address and you will land on the "setup" page and can see all other pages such as "Playback queue", "Artworks on device", "Playlists on device" etc.

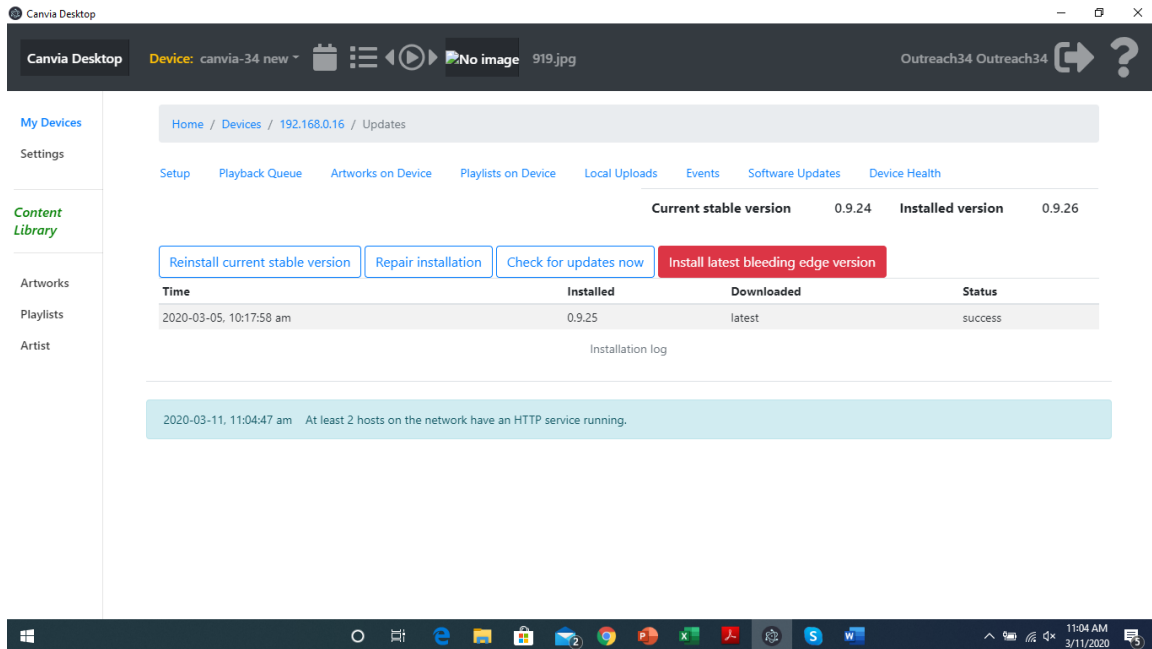
2: Install latest firmware in the Canvia system

- a) Use your canvia login/password after desktop app installation.
- b) Goto settings-> use your home wifi credentials and click "Save"
- c) Goto->My devices-> click refresh. You need to wait till you see your IP address under SSID/IP.
- d) Once you see IP address, click on the IP address and you will land on the "setup" page
- e) To update with latest software, goto Home->Devices->IP address->"Software updates" ->"Install latest bleeding edge version"
- f) To update with current stable software, goto Home->Devices->IP address->"Software updates" ->"Reinstall current stable version"
- g) Please see the screenshot below

Palacio Inc.

<https://www.canvia.art/>

2010 El Camino Real, Santa Clara Town Center, Suite#1030, Santa Clara, CA, 95050



- h) Screen will go blank and will come back to normal.
- i) If you need help, contact support@canvia.art

Note: If you see it gets struck at blank screen, you can power cycle or unplug the power and plug it back.

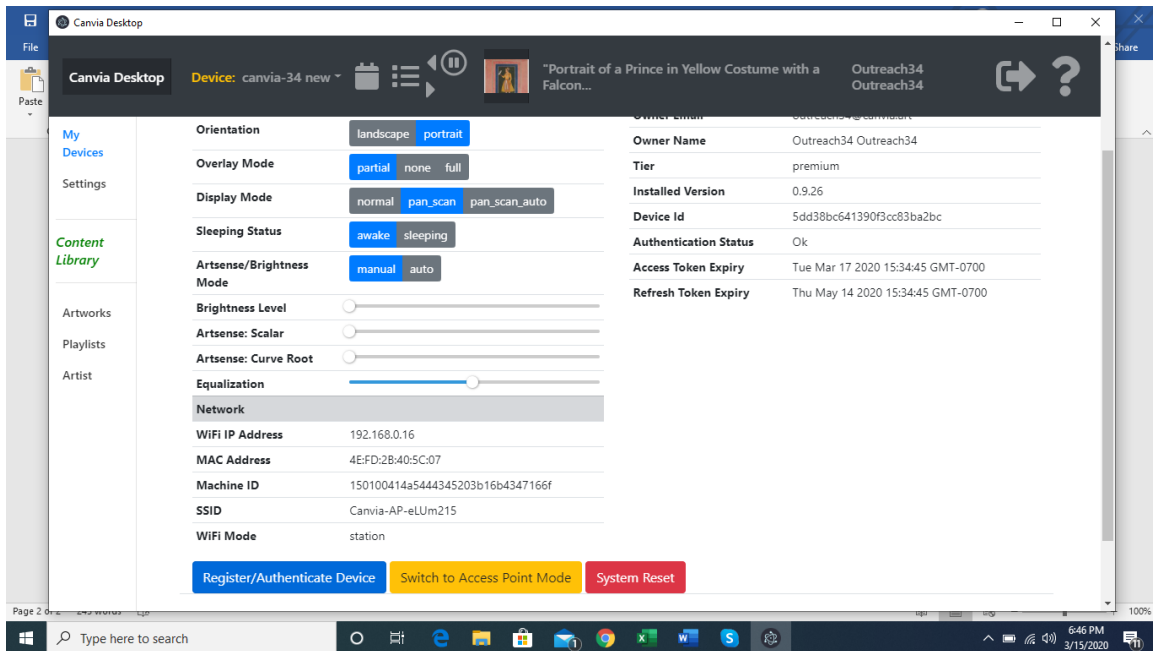
3: Re-register/authenticate the Canvia device, when you get token error

- a) Use your canvia login/password after desktop app installation.
- b) Goto settings-> use your home wifi credentials and click "Save"
- c) Goto->My devices-> click refresh. You need to wait till you see your IP address under SSID/IP.
- d) Once you see IP address, click on the IP address and you will land on the "setup" page
- e) To re-register/authenticate, goto Home->Devices->IP address->"setup" and click on "Register/Authenticate Device"(in blue color) at the bottom of the "setup" page
- f) Please see the screenshot below

Palacio Inc.

<https://www.canvia.art/>

2010 El Camino Real, Santa Clara Town Center, Suite#1030, Santa Clara, CA, 95050



Note: If you don't overcome "token error" issue, please connect with support@canvia.art

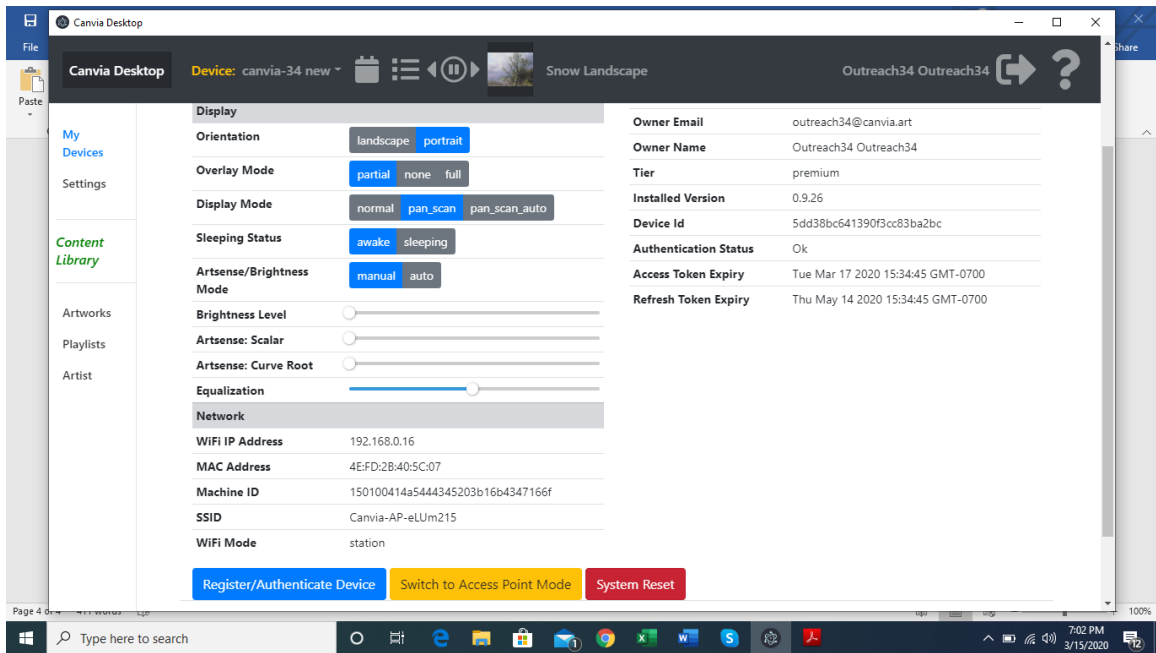
4: Delete all personal data in the Canvia system,

- a) Use your canvia login/password after desktop app installation.
- b) Goto settings-> use your home wifi credentials and click "Save"
- c) Goto->My devices-> click refresh. You need to wait till you see your IP address under SSID/IP.
- d) Once you see IP address, click on the IP address and you will land on the setup page
- e) Under setup page, you will see "System Reset" (in red color) at the bottom. Once you click this button, you will delete all the data on the system.
- f) Under system reset, click on "Switch to Access Point Mode" (in yellow color) then this device is back to default mode and you can transfer the device to any friend or family member.
- g) See the screenshot below

Palacio Inc.

<https://www.canvia.art/>

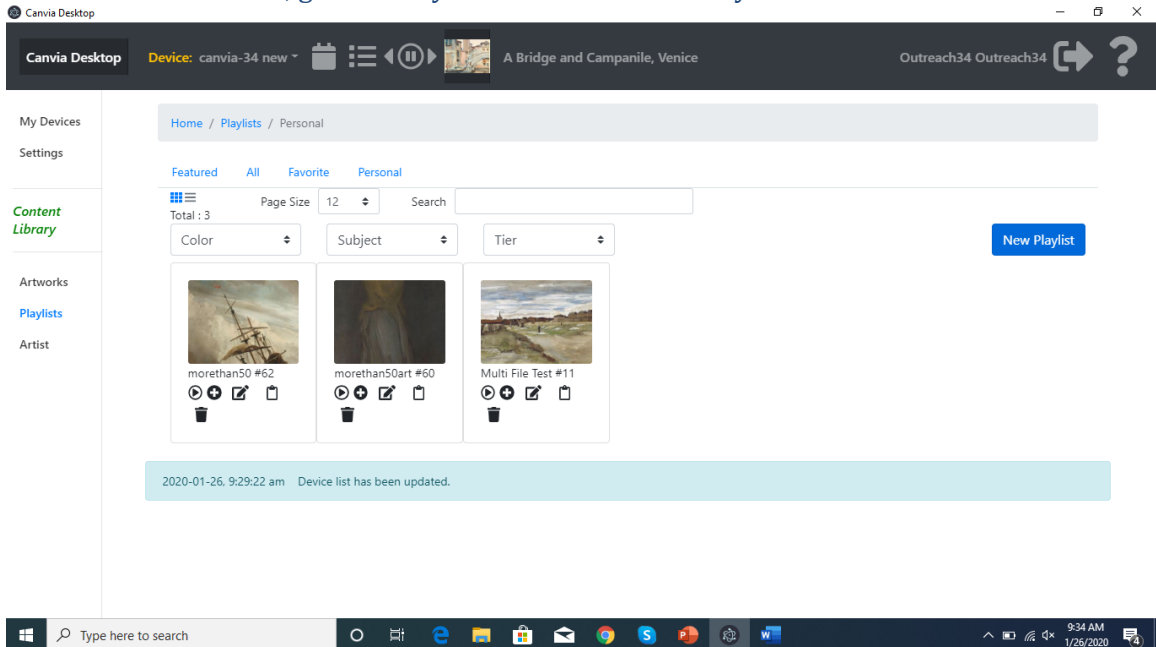
2010 El Camino Real, Santa Clara Town Center, Suite#1030, Santa Clara, CA, 95050



5: Create and delete personal playlist

Step 1:

One the left side menu, go to ->Playlists and click “New Playlist” as shown below:



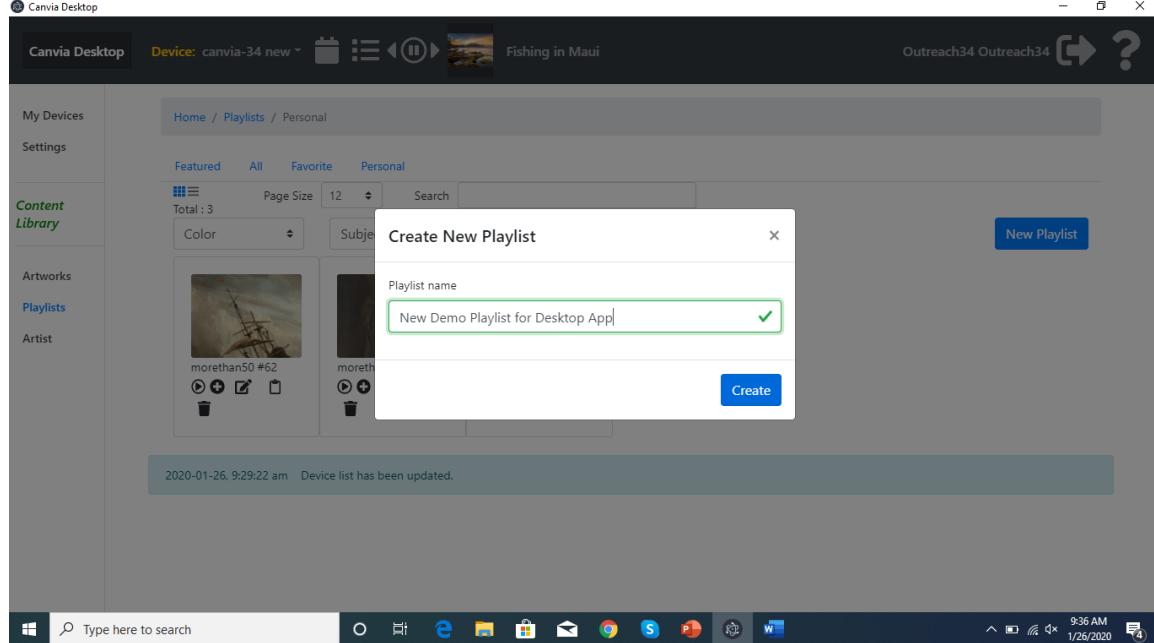
Palacio Inc.

<https://www.canvia.art/>

2010 El Camino Real, Santa Clara Town Center, Suite#1030, Santa Clara, CA, 95050

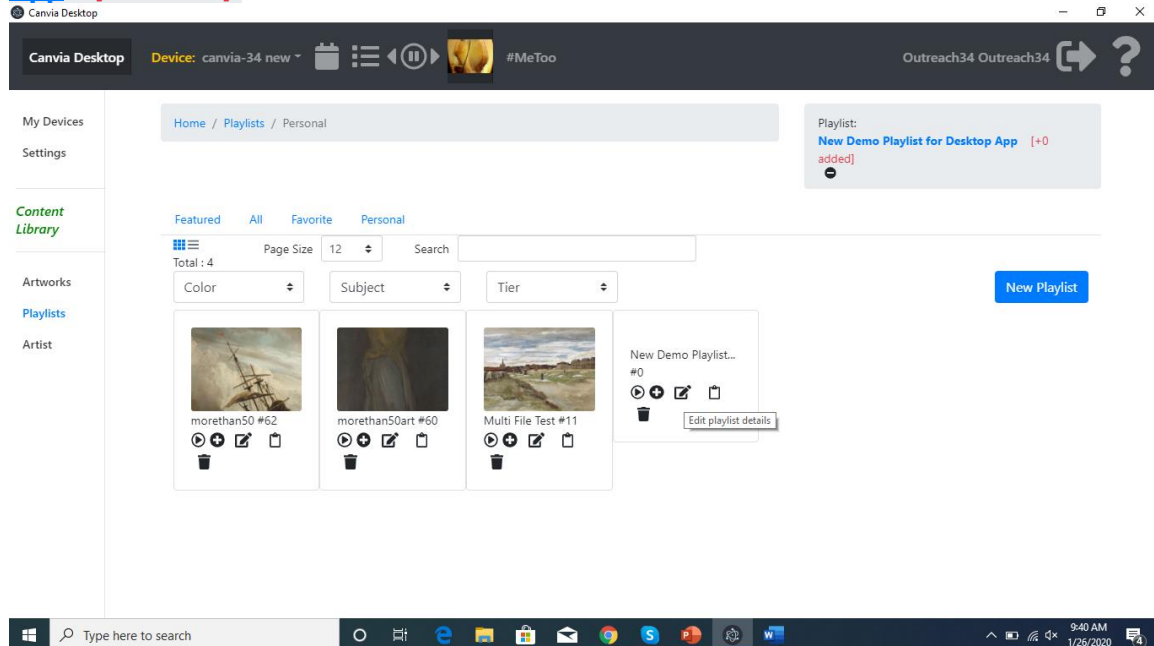
Step 2:

Write appropriate name of the new playlist



Step 3:

Click Edit icon- 3rd from the left on the newly created playlist. You will see this new playlist name appear on the top right corner with a text like this **"New Demo Playlist for Desktop App [+0 added]"**



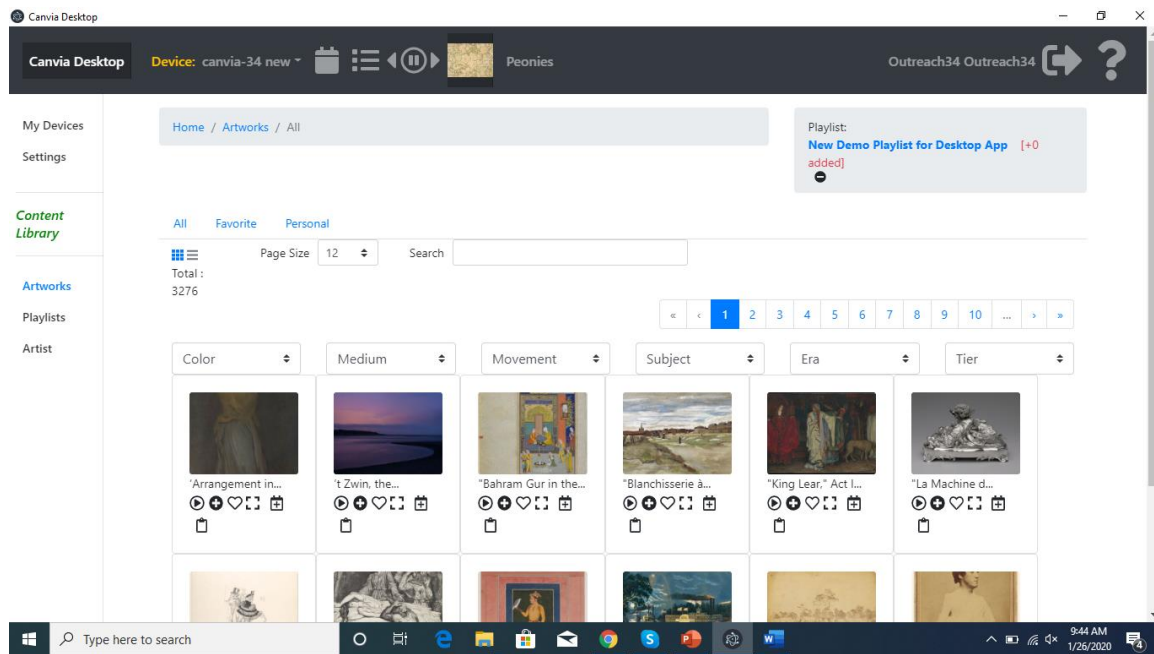
Step 4:

Palacio Inc.

<https://www.canvia.art/>

2010 El Camino Real, Santa Clara Town Center, Suite#1030, Santa Clara, CA, 95050

On the left side menu, click on “Artworks” and you will see all artworks on your page as shown below.



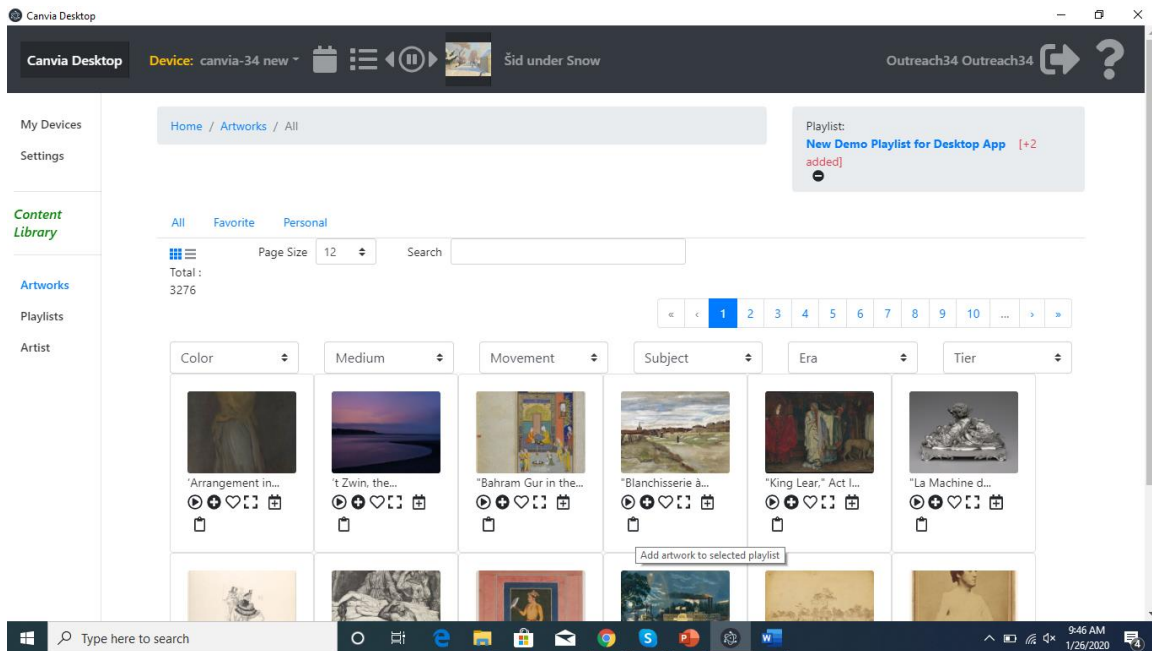
Step 5:

Click on last icon under any artworks and that artwork will be added to the newly created playlist as shown below. It will keep adding as many as you click.

Palacio Inc.

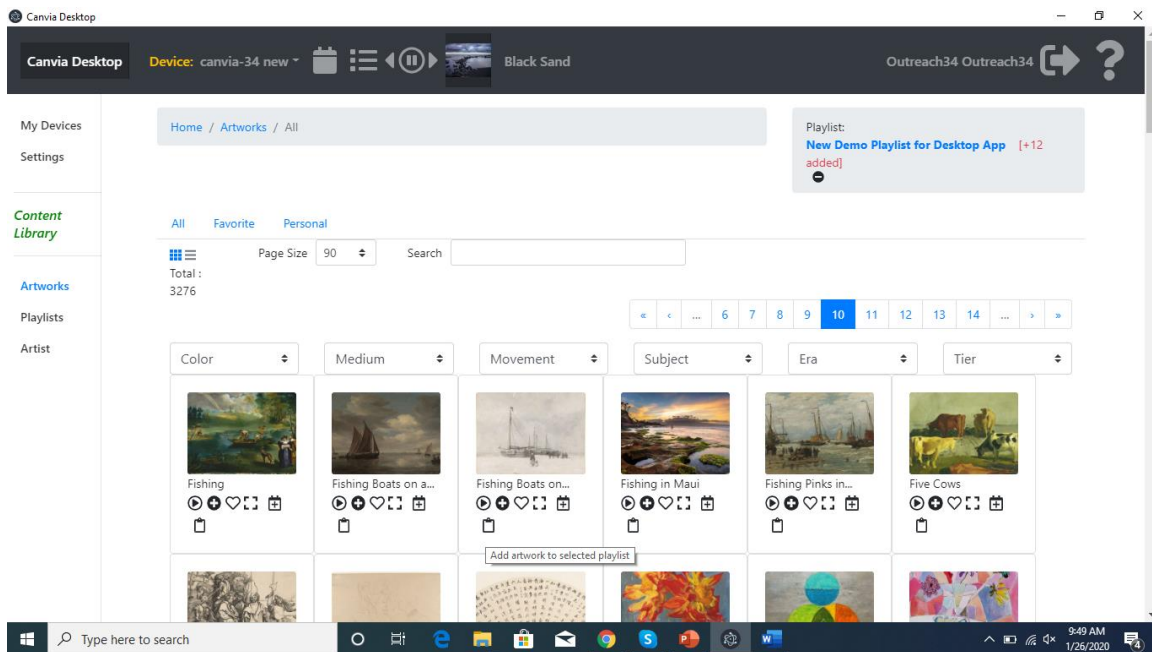
<https://www.canvia.art/>

2010 El Camino Real, Santa Clara Town Center, Suite#1030, Santa Clara, CA, 95050



Step 6:

You can add many as you want. Increase the number of visible artworks by selecting upto 90 artworks per page and then go to a different page to add different number of artworks.

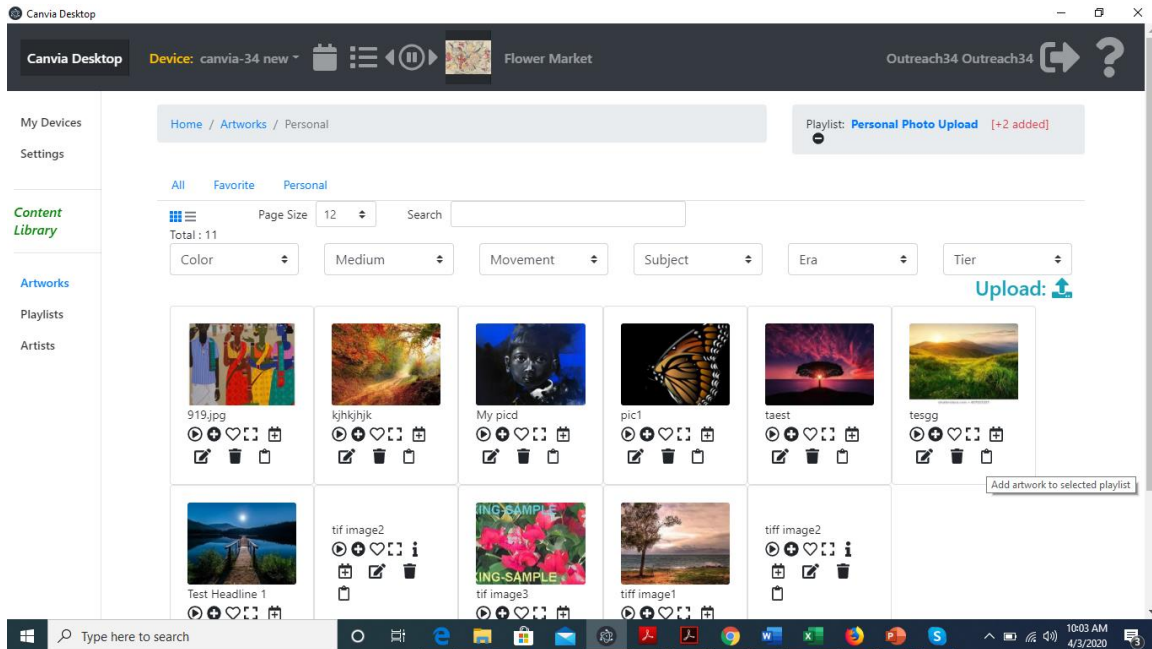


Note: For personal images also, you can use same steps and all images in one personal playlist.

Palacio Inc.

<https://www.canvia.art/>

2010 El Camino Real, Santa Clara Town Center, Suite#1030, Santa Clara, CA, 95050



Step 7:

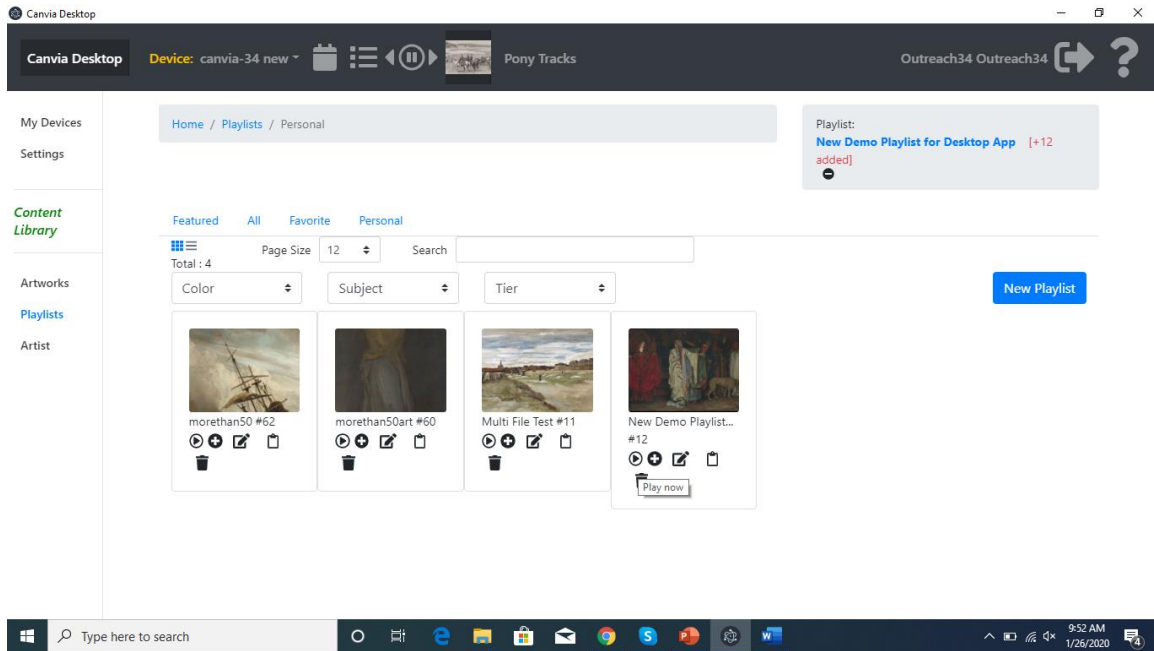
Once you have finalized the artworks for the playlist, select “playlists” on left hand side and you can do any operations on this new playlist such as “play” or “Add to Queue” etc. You can remove the new playlist for editing purpose from the top right corner by click the minimize icon.

You can delete the new playlist or edit again using the icons appearing below this playlist.

Palacio Inc.

<https://www.canvia.art/>

2010 El Camino Real, Santa Clara Town Center, Suite#1030, Santa Clara, CA, 95050



6: Operations within the Canvia device:

(i) “Playback queue”(Slideshow, Shuffle and Playback duration):

On the left hand side menu, go to devices and click on your IP address

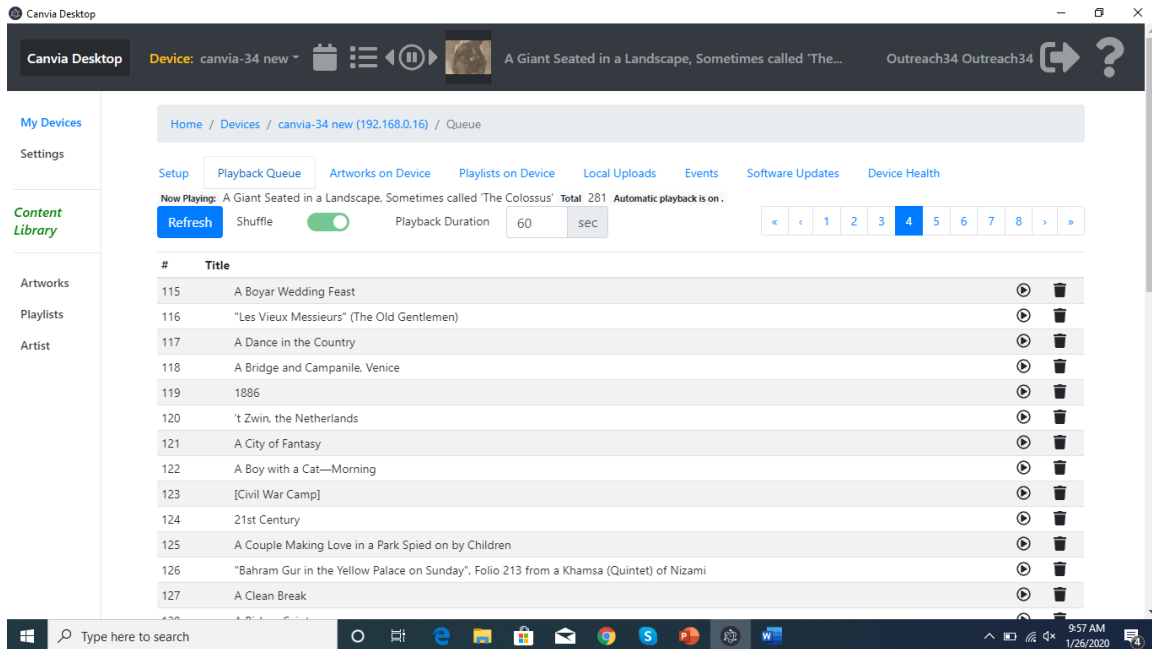
[Home](#)-> Devices->canvia-34 new(192.168.0.xx)

On “Playback queue”, you will be able to “shuffle” and add “playback duration” as shown below:

Palacio Inc.

<https://www.canvia.art/>

2010 El Camino Real, Santa Clara Town Center, Suite#1030, Santa Clara, CA, 95050



(ii) “Artworks on Device”

It shows all artworks that are downloaded inside Canvia device. You can play or edit all artworks on this page.

(iii) “Playlists on Device”

It shows all artworks that are downloaded inside Canvia device. You can play or edit all Playlists on this page.

(iv) “Local Uploads”

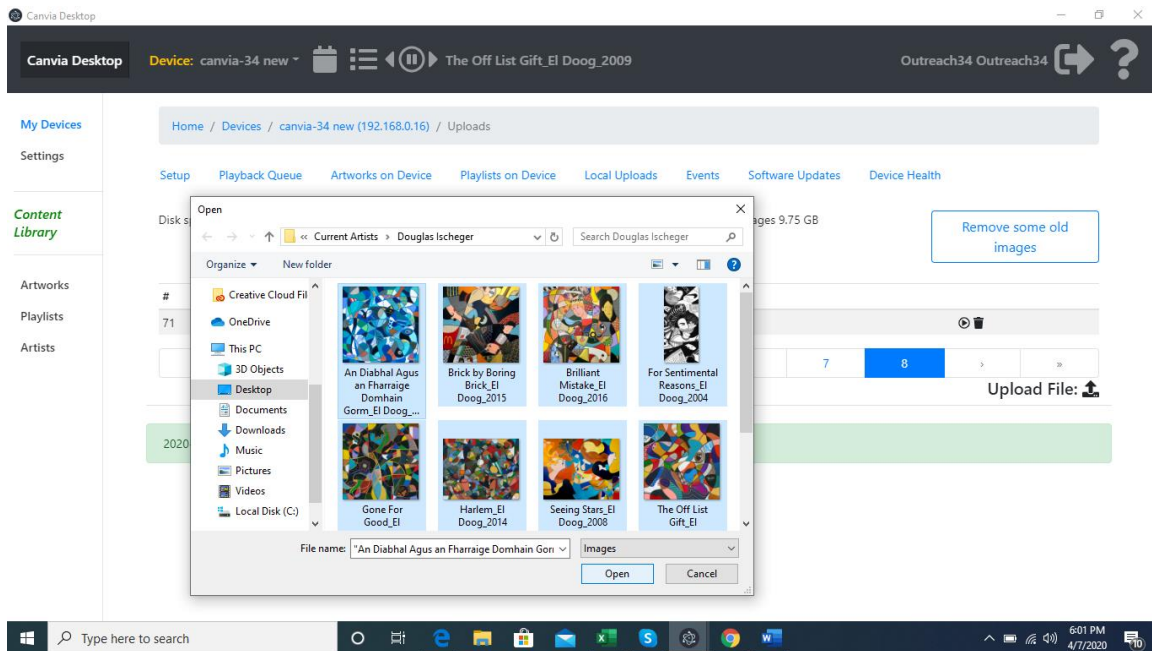
It shows all artworks that are downloaded inside Canvia device from local computer.

- You can upload new artworks from this page on Canvia device.
- All artworks uploaded from here are local to your network.
- You can play or edit all Playlists on this page.
- You can check the disk space usage
- You can remove some old artworks to free the disk usage using “Remove some old images” icon
- You can upload multiple files at one time as shown in the image below. After you upload, images will start playing one by one on your Canvia screen and also added in the queue
- Images uploaded using “Local Uploads” are there on local Canvia local system and cloud only gets the name of the image not even the thumbnails.

Palacio Inc.

<https://www.canvia.art/>

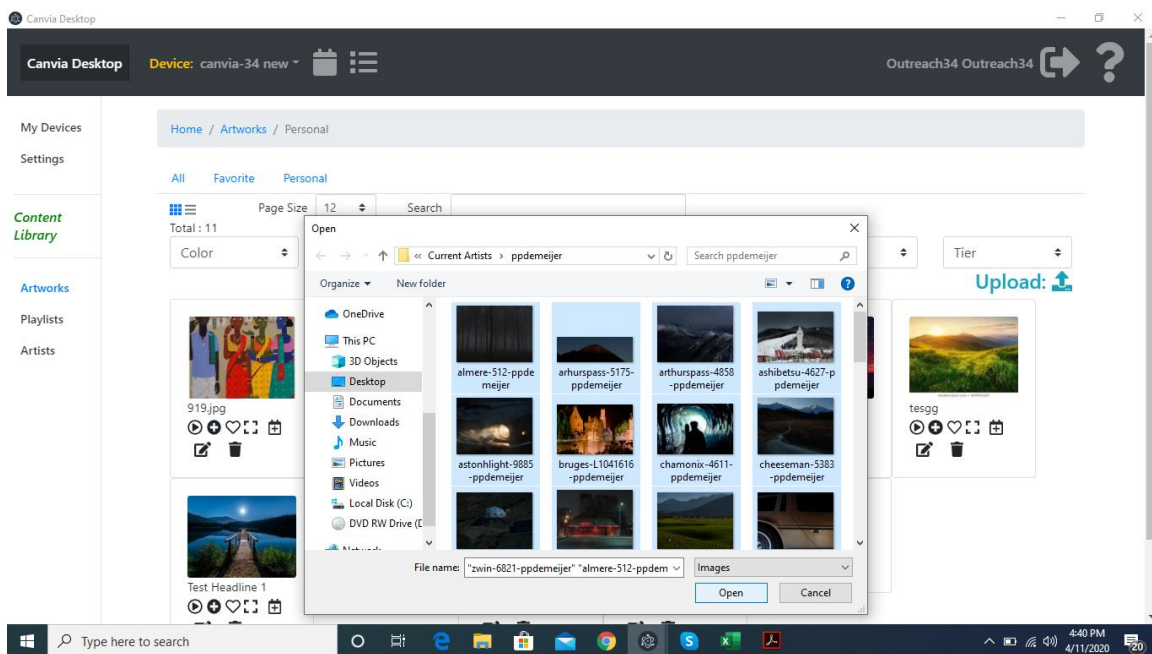
2010 El Camino Real, Santa Clara Town Center, Suite#1030, Santa Clara, CA, 95050



7. Play your personal images and multi file upload through personal playlists

Step 1: Goto->Artworks(left side menu)->Personal

Step 2: Click upload and navigate to the right directory where you have stored all the personal images. Select all the images that you want to upload and click “open”.

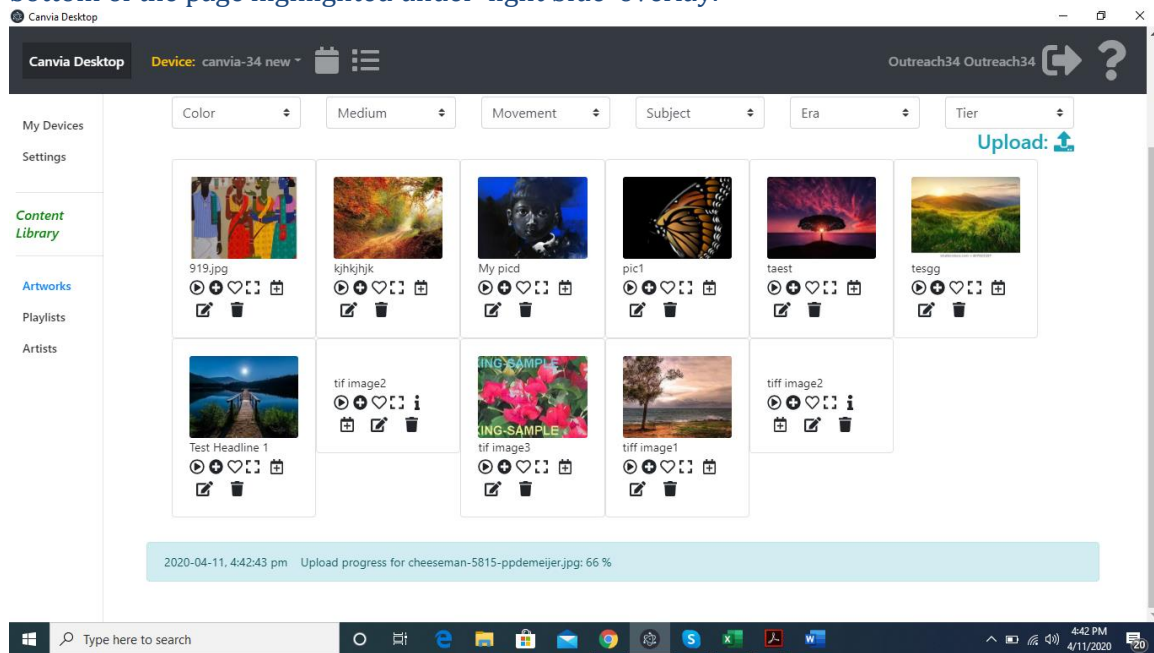


Palacio Inc.

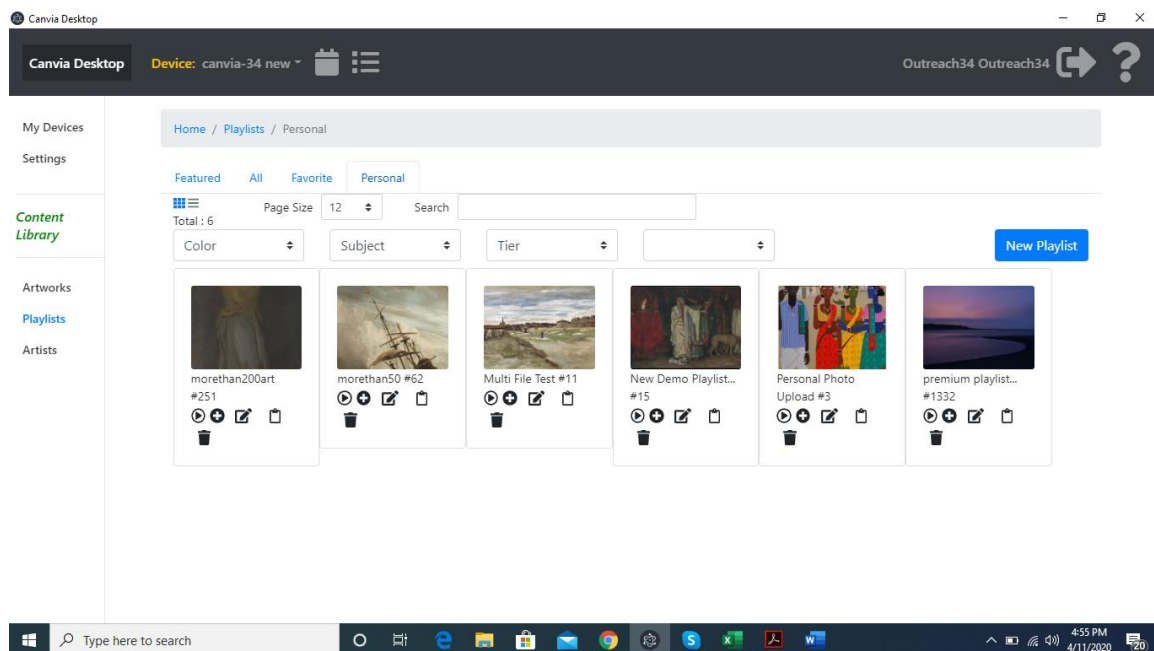
<https://www.canvia.art/>

2010 El Camino Real, Santa Clara Town Center, Suite#1030, Santa Clara, CA, 95050

Step 3: Uploading multiple images may take some time. You will see the progress at the bottom of the page highlighted under 'light blue' overlay.



Step 4: To add all images under one personal playlist or directory, Goto-> Playlists (left side menu)-> Personal

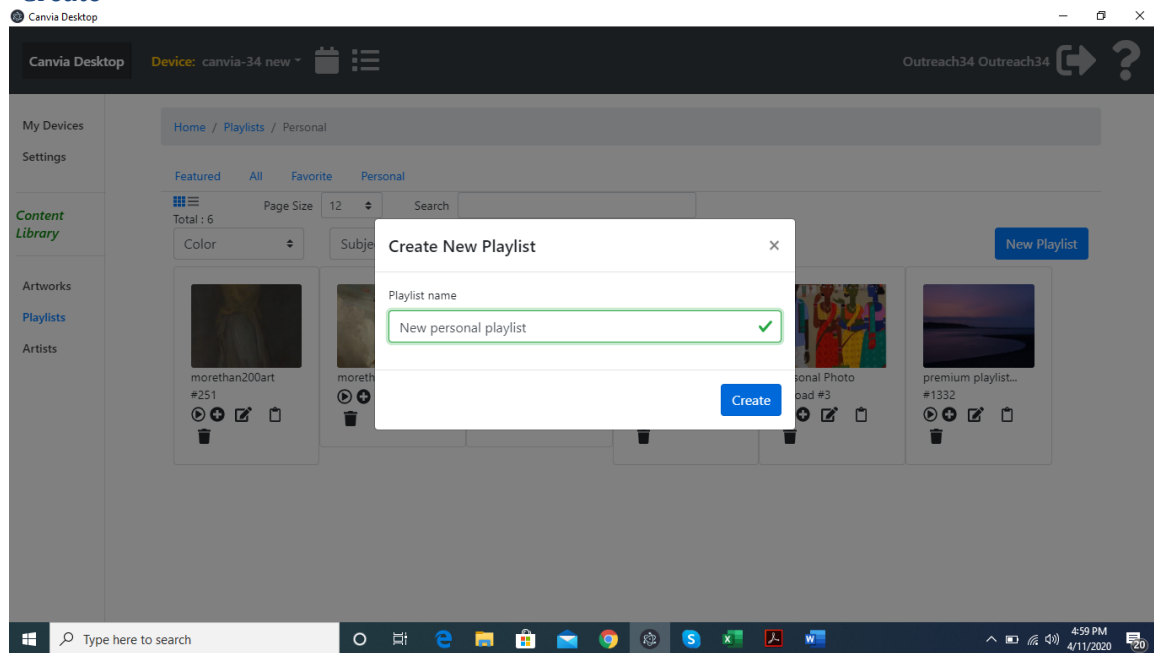


Palacio Inc.

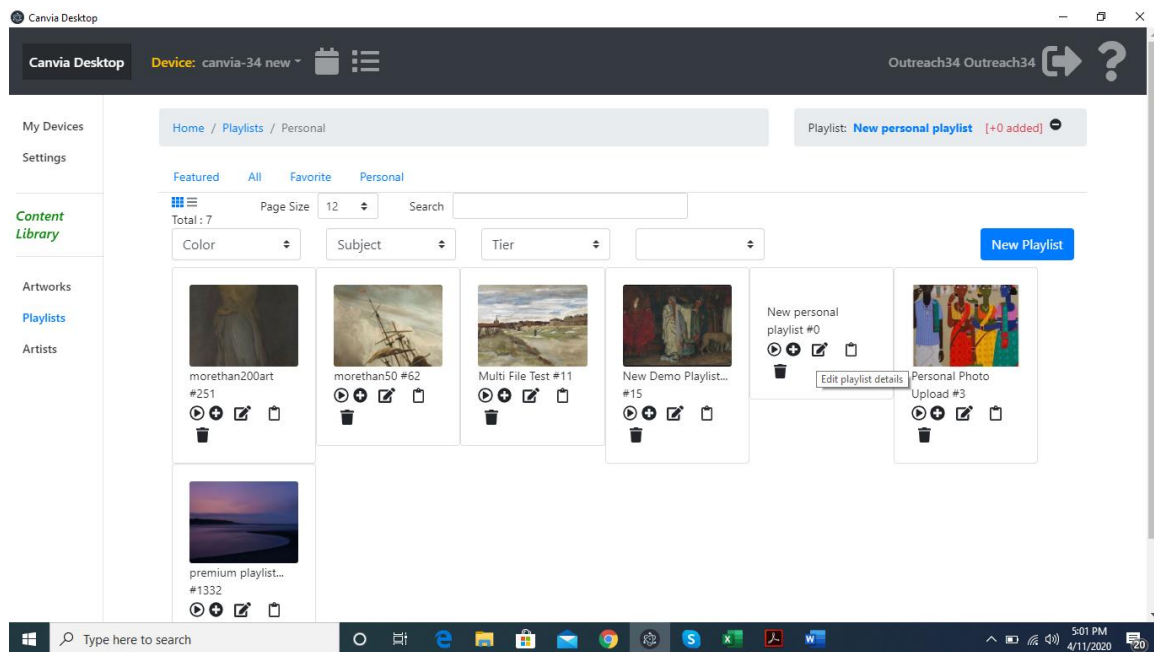
<https://www.canvia.art/>

2010 El Camino Real, Santa Clara Town Center, Suite#1030, Santa Clara, CA, 95050

Step 5: Click on “New Playlist” and write the new playlist name as shown below. Click “Create”



Step 6: Click on “Edit playlist details” icon to add uploaded images and description as shown below.

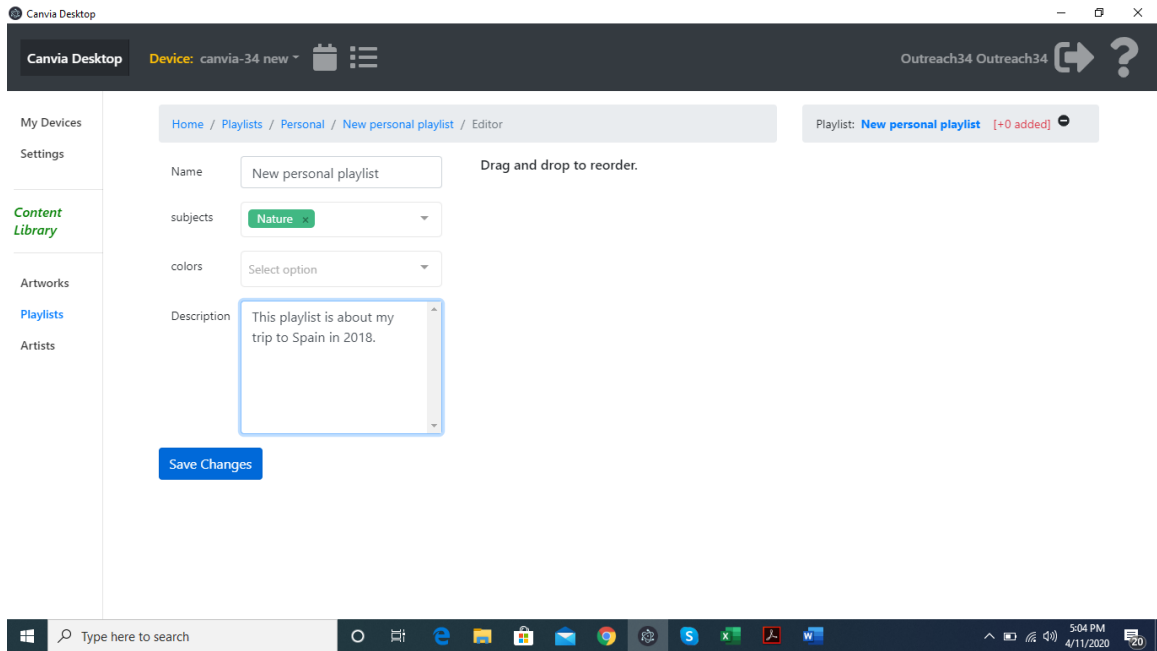


Step 7: After clicking on “Edit playlist details” icon, you can add description of the playlist and add other information of the playlist as shown below:

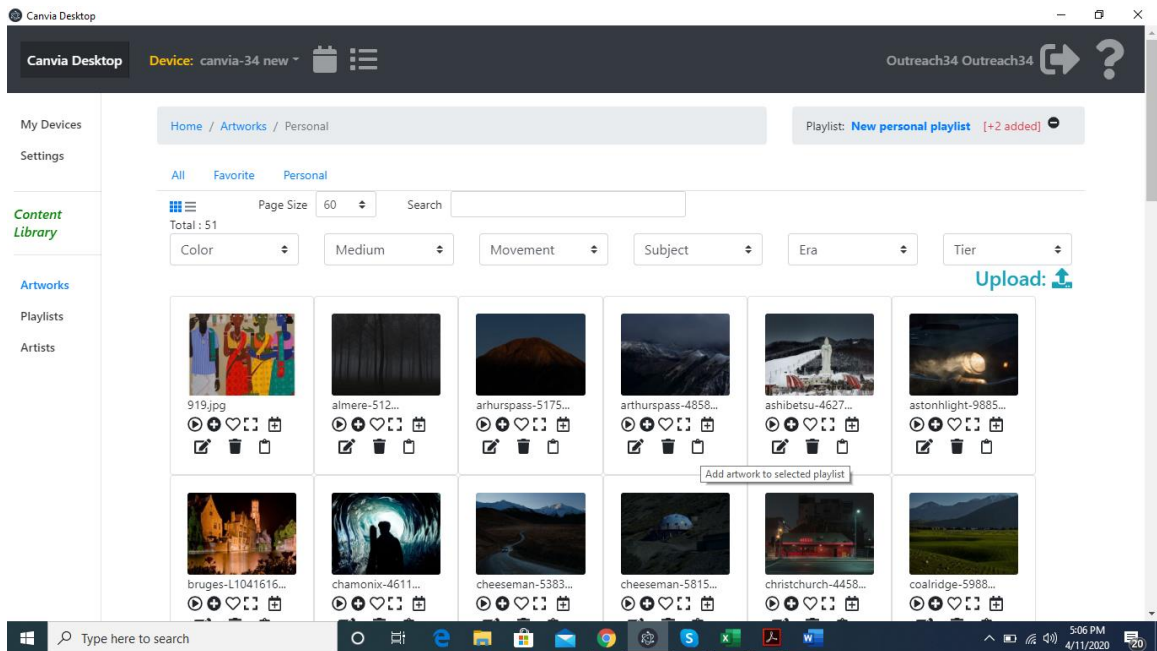
Palacio Inc.

<https://www.canvia.art/>

2010 El Camino Real, Santa Clara Town Center, Suite#1030, Santa Clara, CA, 95050



Step 8: To add the uploaded images in this playlist “New personal playlist”
 Goto-> Playlists (left side menu)-> Personal and click on “Add artwork to the selected playlist”
 on all the images you want to add in this playlist. You will see the number count for images
 going up every time you add one image to this playlist.



Palacio Inc.

<https://www.canvia.art/>

2010 El Camino Real, Santa Clara Town Center, Suite#1030, Santa Clara, CA, 95050

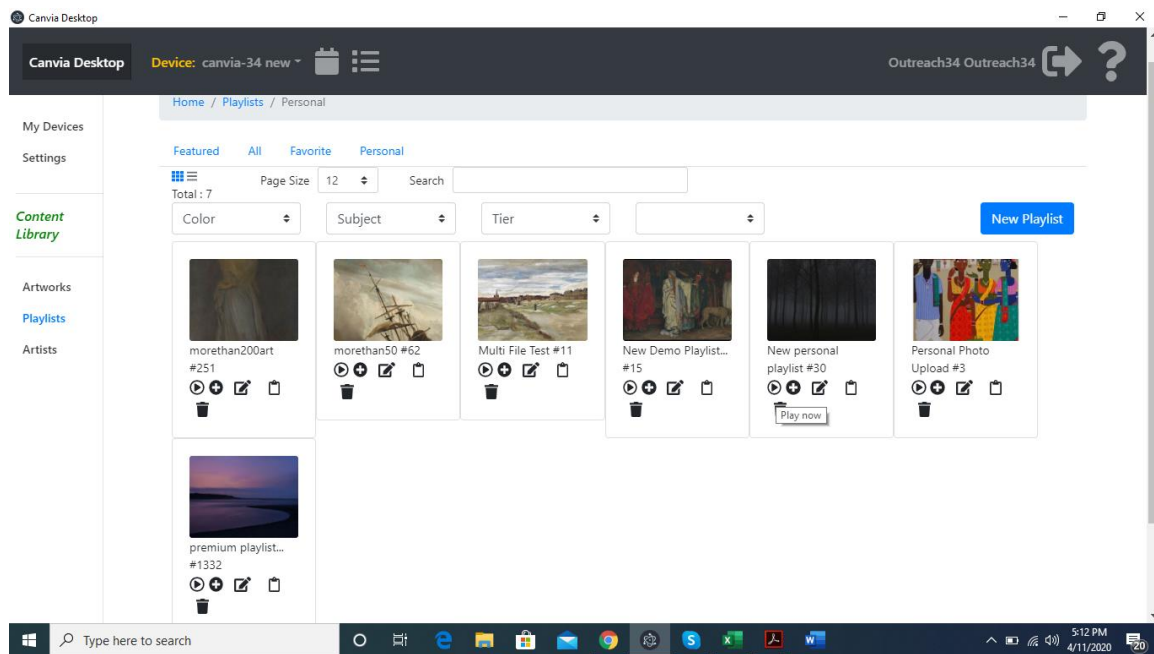
Step 9: Once, you have added all the images in the new playlist “New personal playlist”, you can minimize the icon and complete addition of images. To play or add to the queue, Goto-> Playlists (left side menu)-> Personal

And click on “play” or “add to queue” commands so that entire playlist can be added to the queue.

Note: You can also play this new personal playlist from the website(my.canvia.art) or desktop app from the device interface as well as written below:
On the left hand side menu, go to devices and click on your IP address

[Home](#)-> Devices->canvia-34 new(192.168.0.xx)

On “Playback queue” or “playlist on device”, you can find the new playlist and play it.



Palacio Inc.

<https://www.canvia.art/>

2010 El Camino Real, Santa Clara Town Center, Suite#1030, Santa Clara, CA, 95050